



University of Cyprus  
Department of Biological  
Sciences

# POSTGRADUATE SEMINAR ANNOUNCEMENT

*Seminar Series 2021-2022*

**PD Dr. Dina K. N. Dechmann**

Research Group Leader

Max Planck Institute of Animal Behavior



**Wednesday,  
10 November 2021  
at 5:00 pm**

**Attendance Information:**

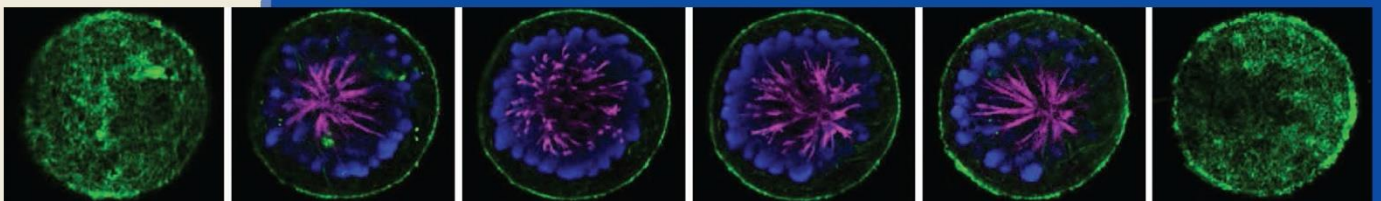
Physical presence in Building CTF 01, Room 108, only available to students registered in BIO 800 - 803 Postgraduate Seminars I-IV.

The seminar is open to the public via Zoom.

Click [here](#) to find the seminar registration link and join our seminar.

## “Ephemeral Resource Adaptations”

In order to survive, animals have to adapt to, often ephemeral, resource availability. Small high-metabolic mammals, that function at the energetic knife's edge have to develop behavioral, physiological and morphological strategies that allow them to overcome changes and bottlenecks, especially in food availability. Bats, with their expensive mode of locomotion - flight, and often extreme ecological adaptations are an excellent model for this. In addition, not only morphology or physiology, but also group structure and stability and ultimately the evolution of sociality can be linked to resource availability, for example through increased foraging efficiency via social information transfer. We have developed a framework for social information use based on the distribution of resources in the landscape and I will give an overview of our experiments as well as targeted field work to support and quantify how niche adaptation, seasonal energetic pressure and behavioral adaptations are linked to resource ephemerality. Ongoing work currently takes us deeper into directly addressing targeted questions regarding the link between the resource landscape and the occurrence of social information use in flexible and obligate social foragers incorporating seasonal environmental change as well as life history stage.



For more info visit: <https://newdev.ucy.ac.cy/biol/latest-news/seminars/>